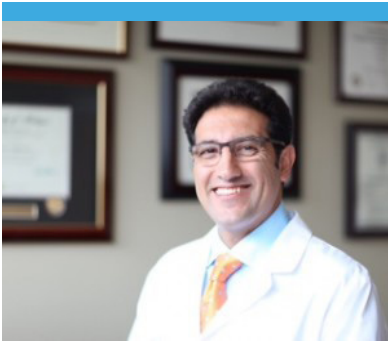


Dr. Alireza Bagherian of Synapse Health Center Depends on JTECH Medical Systems



Dr. Bagherian has relied on a JTECH Medical system to help him grow his practice for over 20 years.

JTECH Medical Benefits

- Continuously enhancing the system for more than 30 years
- Delivering excellent, always-on customer support
- Delivering increased revenues with objective, defensible data and reports
- Meeting the needs of referral sources, such as attorneys and insurance companies

The world of personal injury and workers' compensation can often be an adversarial environment. Without the right tools, it can be intimidating and challenging for healthcare providers to navigate. Many specialists, including Dr. Bagherian, depend on JTECH Medical systems in these situations to help them:

- Consistently capture reliable objective data
- Efficiently generate defensible documentation that is consistent with industry standards
- Optimize case outcomes

According to Dr. Bagherian, "When I was first introduced to JTECH Medical, I was pleasantly surprised at how any healthcare provider, whether it be a surgeon, occupational therapist, physical therapist, or chiropractor, could objectively and empirically measure human performance with such a high degree of validity and reliability."

Building His Practice on Science

Dr. Bagherian started using the JTECH system in his clinical practice more than 20 years ago. Ever since then, he has appreciated the value of the software and equipment working together in an integrated manner as he performs functional capacity evaluations. He commented, "The system is multifaceted and robust allowing an examiner to measure an initial baseline after an injury and upon re-examination, capture new measurements that indicate if a patient has improved or not. Using reliable and reproducible objective data, the JTECH system allows the examiner to more effectively communicate with and educate patients on how much they have improved or if there is a need for further care."

Evidence for Reimbursement

One of the biggest challenges many healthcare professionals face is reimbursement from third-party payers who want objective data that demonstrates medical necessity and verifiable outcomes. Through reliable and evidence-based findings, JTECH reports allow an examiner to capture and document a patient's progress or lack thereof. In cases where the patient has responded favorably and positively to treatment, the JTECH reports can provide information that can be used to support the medical necessity and reasonableness of care.

Medical Legal Cases

In workers' compensation and civil cases that may require litigation, experienced attorneys and other professionals turn to providers who use the JTECH systems to evaluate their cases. According to Dr. Bagherian, the JTECH system allows the examiner



to collect reliable and objective findings that are reproducible and support the fundamental requirements of evidence-based evaluations.

JTECH systems allow Dr. Bagherian to collect reliable, objective findings that are reproducible and support evidence-based evaluations.

When asked what makes JTECH unique, Dr. Bagherian commented, “There are competitors that can do range of motion with computerized dual inclinometers, but JTECH allows you to go further. It allows you to take the unique considerations of each individual patient and measure for that specific situation. For example, if a patient has had neck fusion surgery, the software can take that into account and generate an assessment based on that individual’s condition.

Protecting the Patient

When muscle testing is performed, patients may be at risk of additional injury during an evaluation due to the subjective nature of traditional manual muscle testing. However, the JTECH computerized muscle-testing system allows the evaluator to conduct muscle testing through real-time display of force curves. According to Dr. Bagherian, “Medicine is not a one size fits all. Every individual is different, and the JTECH system allows evaluators to perform various functional exams with the patient’s safety at the forefront.”

Global Validation

JTECH Medical prioritizes quality and undergoes yearly, independent audits to certify their commitment to quality.

Another reason JTECH is Dr. Bagherian’s system of choice is that the equipment is US manufactured in an environment that prioritizes quality. JTECH Medical is FDA-registered and certified to ISO 13485, which is the international standard for quality management systems followed by organizations who develop and produce medical devices. JTECH products are registered and licensed in USA, Canada, Australia, Japan, the European Union, the United Kingdom, Korea, Malaysia and many more countries.

JTECH Medical undergoes yearly, independent audits to maintain its licenses and certifications, proving its commitment to quality. Plus, every system is factory calibrated with equipment traceable to National Institution of Standards and Technology (NIST) standards. This gives referring professionals confidence that the system has been validated and the evaluator increased credibility in the jurisdiction.

For more information on JTECH Medical or to connect with Dr. Bagherian, visit www.jtechmedical.com or email us at sales@jtechmedical.com

About Alireza Bagherian, DC, CCEP, QME, DAIPM, ABVE/F

Dr. Bagherian is the founder and clinic director of Synapse Health Center in San Francisco. He has been in clinical practice since 1997 and specializes in the diagnosis, treatment and management of musculoskeletal / soft tissue injuries and mild traumatic brain injuries (mTBI) for professional athletes, motor vehicle crash victims, injured workers, and the private sector.

Dr. Bagherian has completed extensive post-doctorate training within the areas of injury causation, injury biomechanics, occupant kinematics, human factors, accident reconstruction, functional capacity evaluations, disability, and permanent impairment. Dr. Bagherian is a fellow of the American Board of Vocational Experts and was awarded the Presidential Citation Award by the ABVE in 2019.

Dr. Bagherian is a certified accident investigator and accident reconstructionist. He holds additional certification in low speed and low energy rear impact collisions from the Center for Research into Automotive Safety and Health (CRASH) and the Spine Research Institute of San Diego. From 2000 to 2006, Dr. Bagherian participated in live crash analysis as a research assistant and medical examiner in over 75 vehicle impacts. His seven years involvement with crash testing involved RID crash test dummies and live human subjects (male and female) which were instrumented for velocity measurements and force calculations under the general theory of the Society of Automotive Engineers.

In the areas of injury causation, injury biomechanics, human risk factors, forensic analysis and mTBI, Dr. Bagherian has additional training from the Spine Research Institute of San Diego, University of California Riverside, UCLA, Department of Engineering at the University of Michigan, and Radboud University Nijmegen in the Netherlands.

Dr. Bagherian holds a black belt in Enshin Karate and has been involved with the world of full contact fighting for over 30 years. He has represented the United States kickboxing and Muay Thai team as Team USA's physician in the 2006 World Cup in Thailand and the TAFISA Games under the International Olympic Committee in South Korea in 2007.

About JTECH Medical

JTECH Medical systems enable the most accurate and efficient functional assessments that help physicians improve clinical outcomes for their patients and financial outcomes for their practice. Our systems capture objective data faster and more accurately than traditional methods and provide detailed, easy-to-understand documentation that is driven by industry standard guidelines from the American Medical Association. For more than 30 years, thousands of clinical professionals around the world have used JTECH systems to successfully grow their practices with confidence.